

# KNOW WHERE TO THROW



## "BAGGED" TRASH

- Place wet trash in landfill compactors located at C-61, E-47, H-35, and J-12.
- Do not put trash bags into any recycling containers or open tops.



## "DRY" TRASH

- Place dry trash into open top landfill containers located at C-62, D-60, H-34, and I-13.
- Do not put garbage into any recycling containers.



## RECYCLING

- We offer free recycling of cans and bottles for attendees, which are collected in blue recycling bins.
- Collect blue recycling bags separately and leave in tilt carts at back of halls.
- Blue recycling bags will be taken to the sorting area on Dock D-59.



## CARDBOARD; PAPER SIGNAGE

- Collect cardboard and paper signs in separate tilt carts and bring to the cardboard compactors on Docks C-63, D-59, and H-33, and baler at Dock J-1.
- No cardboard in landfill open tops.
- No trash in cardboard compactors.



## VISQUEEN - CLEAR PLASTIC ONLY

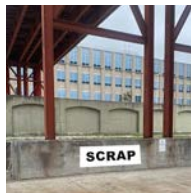
- Bring to plastic balers on Docks E and H.
- No trash in balers.



## WOOD/LUMBER

- Place only untreated wood and lumber in containers on Docks C-64 and H-31.
- No pallets allowed in wood recycling.

**ALL PALLET ARE TO BE REMOVED BY SHOW.**



## SCRAP

- Bring items that are mostly metal (shelving, poles, etc.) to the metal open tops located at the Flood Wall near Dock H.
- Bring items that are scrap wires or cables to the scrap open top located at Dock H-32.

## QUESTIONS?

PLEASE CALL FACILITIES AT 504-582-3024, OR 504-582-3040 AFTER 3:00 PM.

# KNOW WHERE TO THROW

## Building and Contractors:

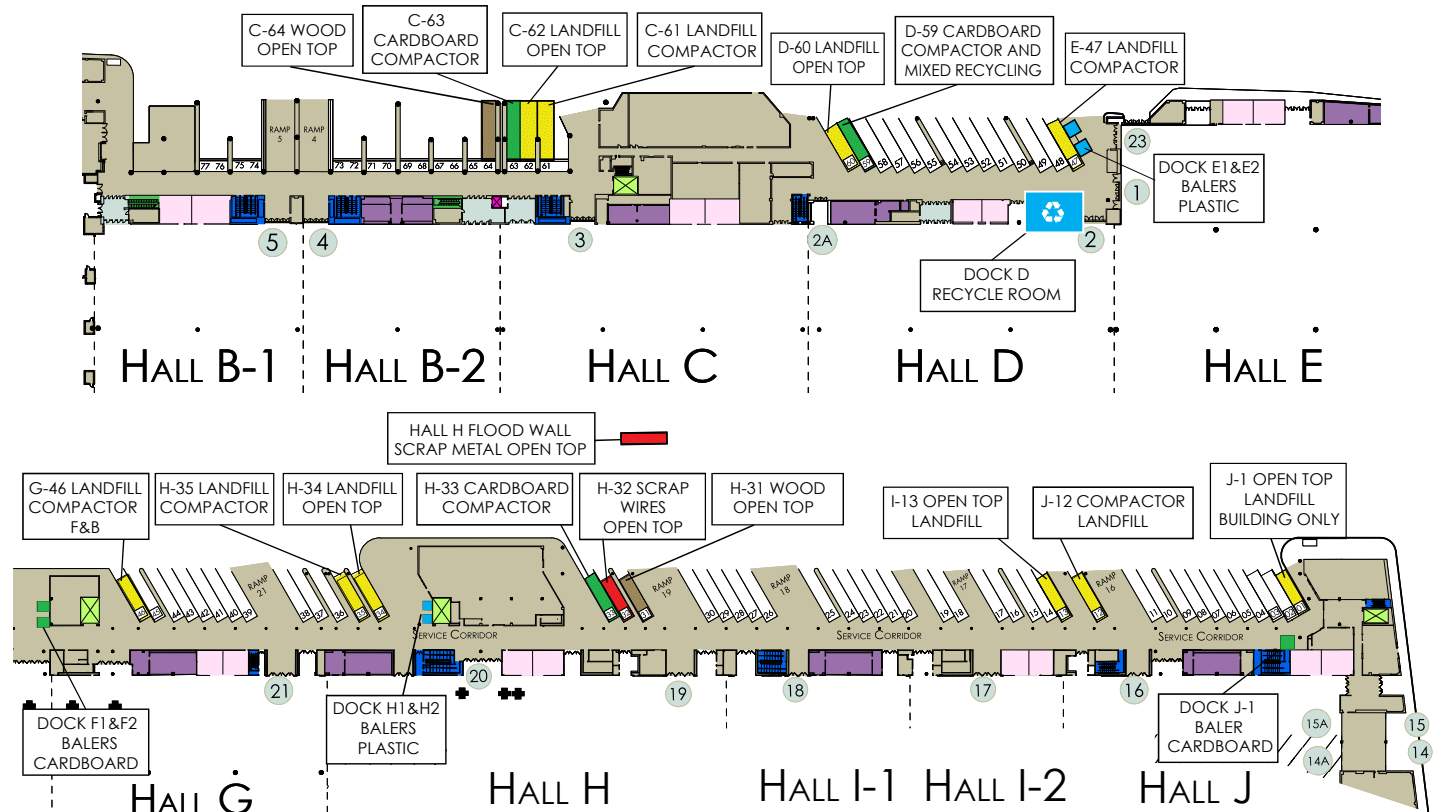
- Building staff should NOT use event containers for trash disposal – only J-1
- Do NOT use event containers.
- Check with dock staff if other containers are needed. Call 504-582-3024.
- Use recycling areas as listed on the map for cardboard and scrap.

## Food & Beverage:

- G-46 F&B Compactor is dedicated to kitchens and food waste. .
- Food waste can NOT be put into open tops or event/building containers.
- Use recycling areas as listed on the map for cardboard and scrap.

DOCK BAY NUMBER	UNIT	CONTENTS
C-64	Open Top	Wood ONLY
C-63	Compactor	Cardboard
C-62	Open Top	Landfill
C-61	Compactor	Landfill
D-60	Open top	Landfill
D-59	Compactor	Cardboard
D-59	Open top	Mixed Recycling
E-47	Compactor	Landfill
Ramp E	Balers	Visqueen
G-46	Compactor	F&B Landfill

DOCK BAY NUMBER	UNIT	CONTENTS
H-35	Compactor	Landfill
H-34	Open top	Landfill
Ramp H	Balers	Visqueen
H Flood Wall	Open top	Scrap Metal
H-33	Compactor	Cardboard
H-32	Open top	Scrap Wires ONLY
H-31	Open top	Wood ONLY
I-13	Open top	Landfill
J-12	Compactor	Landfill
J-1	Open top	Building Landfill
J-1	Baler	Cardboard



# KNOW WHERE TO THROW



## "BAGGED" TRASH

- Place wet trash in landfill compactors located at C-61, E-47, H-35, and J-12.
- Do not put trash bags into any recycling containers or open tops.



## "DRY" TRASH

- Place dry trash into open top landfill containers located at C-62, D-60, H-34, and I-13.
- Do not put garbage into any recycling containers.



## RECYCLING

- We offer free recycling of cans and bottles for attendees, which are collected in blue recycling bins.
- Collect blue recycling bags separately and leave in tilt carts at back of halls.
- Blue recycling bags will be taken to the sorting area on Dock D-59.



## CARDBOARD; PAPER SIGNAGE

- Collect cardboard and paper signs in separate tilt carts and bring to the cardboard compactors on Docks C-63, D-59, and H-33, and baler at Dock J-1.
- No cardboard in landfill open tops.
- No trash in cardboard compactors.



## VISQUEEN - CLEAR PLASTIC ONLY

- Bring to plastic balers on Docks E and H.
- No trash in balers.



## PALLETS

- Cleaning Contractors and GSC should not put pallets into the landfill.

**PALLETS ARE REQUIRED TO BE REMOVED BY THE GSC.**



## CARPET TUBES

- Cleaning Contractors should not put tubes into landfill. These are to be returned with carpet by the GSC or exhibitor.

## QUESTIONS?

PLEASE CALL FACILITIES AT 504-582-3024, OR 504-582-3040 AFTER 3:00 PM.

# KNOW WHERE TO THROW



## WOOD/LUMBER

- Place only untreated wood and lumber in containers on Docks C-64 and H-31.
- No pallets allowed in wood recycling.

ALL PALLETS ARE TO BE REMOVED BY SHOW.



## SCRAP

- Bring items that are mostly metal (shelving, poles, etc.) to the metal open tops located at the Flood Wall near Dock H.
- Bring items that are scrap wires or cables to the scrap open top located at Dock H-32.

DOCK BAY NUMBER	UNIT	CONTENTS
C-64	Open Top	Wood ONLY
C-63	Compactor	Cardboard
C-62	Open Top	Landfill
C-61	Compactor	Landfill
D-60	Open top	Landfill
D-59	Compactor	Cardboard
D-59	Open top	Mixed Recycling
E-47	Compactor	Landfill
Ramp E	Balers	Visqueen
G-46	Compactor	F&B Landfill

DOCK BAY NUMBER	UNIT	CONTENTS
H-35	Compactor	Landfill
H-34	Open top	Landfill
Ramp H	Balers	Visqueen
H Flood Wall	Open top	Scrap Metal
H-33	Compactor	Cardboard
H-32	Open top	Scrap Wires ONLY
H-31	Open top	Wood ONLY
I-13	Open top	Landfill
J-12	Compactor	Landfill
J-1	Open top	Building Landfill
J-1	Baler	Cardboard

